

Request for Proposals (RFP) for Rangeland Ecological Assessment

The Tubatulabals of Kern Valley (“Tribe”) invites qualified professionals to submit proposals for conducting a comprehensive Rangeland Ecological Assessment in designated areas within Kwolokam, Kern County, CA. The project site, approximately **154 acres**, is located at **4854 Fay Ranch Rd., Weldon, CA 93283**. The purpose of this project is to evaluate the health and sustainability of rangeland and grazing land ecosystems, identifying key areas for improvement, conservation, and sustainable management. Proposals must include a detailed cost breakdown covering labor and materials and adhere to the scope outlined below.

As part of this project, the Tribe also requests that four tribal members be allowed to shadow the professional team throughout the assessment process for educational and training purposes. These members will be covered under the Tribe’s liability insurance for the duration of the project, ensuring appropriate coverage and protection during all related activities.

Project Overview:

The Tribe seeks a contractor to perform a comprehensive Rangeland Ecological Assessment in specified zones within Kwolokam, as indicated in the attached map.

The Climate-Smart Rangeland Ecological Assessment should focus on:

- **Evaluating** the current health and sustainability of the rangeland ecosystems.
- **Identifying** overgrazed or degraded areas, invasive species, soil health, and water sources.
- **Providing** recommendations for restoration, conservation, and sustainable grazing practices.

Proposal Submission:

All proposals must be submitted to the Tubatulabals of Kern Valley by November 30th 2024.

Please submit via:

Mail: Tubatulabals of Kern Valley, P.O. Box 833, Weldon, CA 93283

Email: mcavajal@tubatulabal.org

Proposals should include:

- A detailed cost breakdown for services.
- A project timeline, including start and completion dates.
- Experience and qualifications of the proposing entity.
- A list of any subcontractors to be used.
- A detailed plan outlining how the Rangeland Ecological Assessment will be conducted.

Scope of Work:

The selected contractor will be responsible for the following:

1. Rangeland Ecology Assessment:

- Evaluate the health and productivity of rangeland ecosystems, including vegetation cover, soil condition, and erosion risk.
- Assess water sources, grazing patterns, and the impacts of livestock on the ecosystem.
- Identify areas of overgrazing, invasive species, or degraded land needing restoration.
- Provide recommendations for sustainable grazing practices and ecosystem management.

2. Final Report:

- Deliver a comprehensive report outlining the current ecological status of the rangelands, identifying problem areas, and offering practical solutions for long-term land management and restoration.
- The report should include maps and data reflecting the findings of the assessment.

Schedule:

- **Start Date:** Work must begin within 30 days of the contract award.
- **Completion:** The Rangeland Ecological Assessment must be completed within 90 days of the contract award.
- **Final Report Submission:** The completed assessment report must be submitted to the Tribe within 120 days of the project start date.

Contractor Qualifications:

Proposals will be evaluated based on the following criteria:

- Demonstrated experience in rangeland ecology assessments and grazing land management.
- Knowledge of California's rangeland management practices, ecological conservation, and livestock impact assessment.
- Ability to meet the required timeline and provide high-quality deliverables.

Questions and Inquiries:

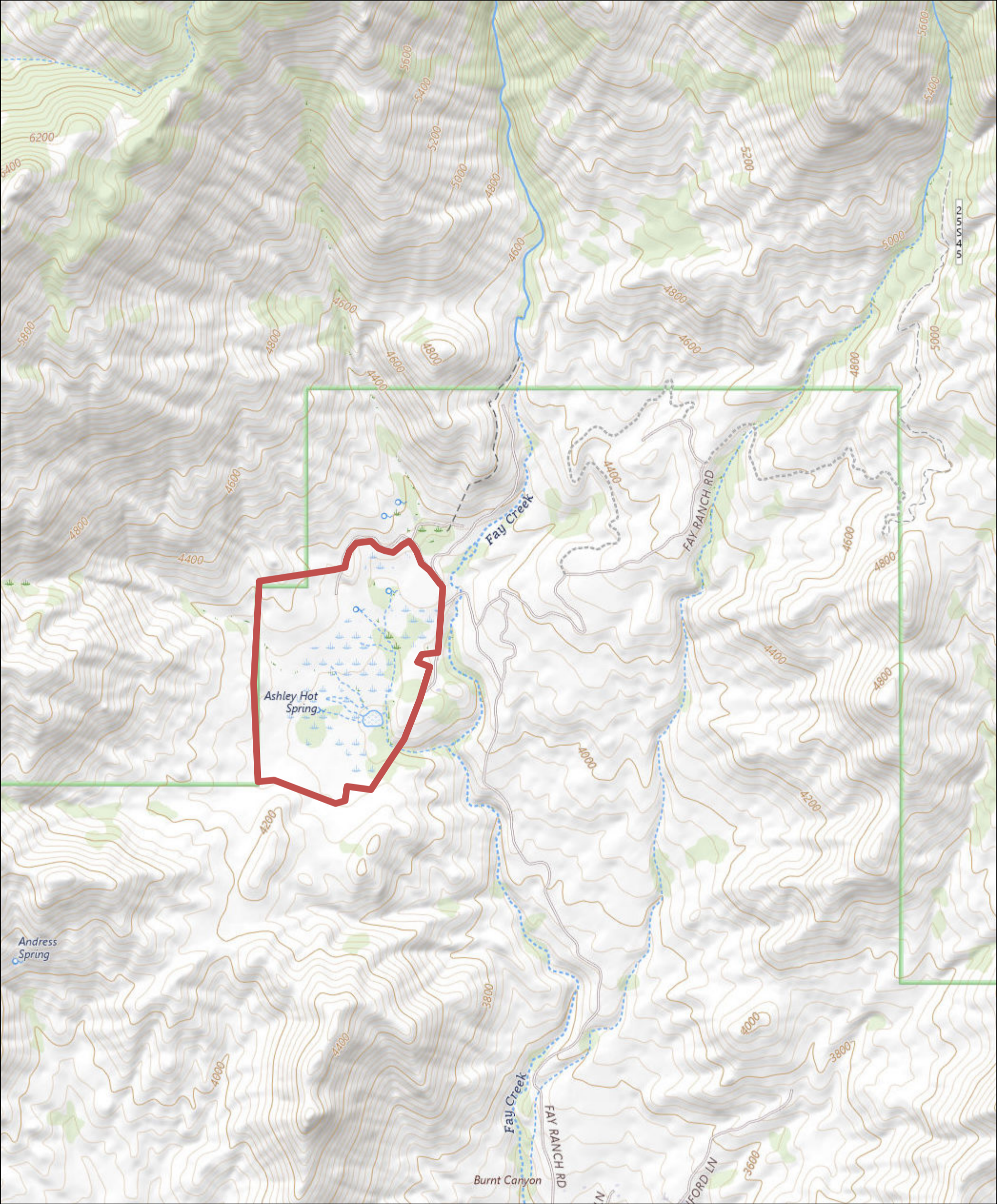
For any inquiries or further clarification regarding this RFP, please contact:

Miguel Carvajal, Project Coordinator

Phone: (760) 223-3984

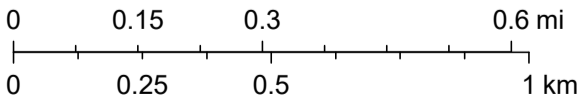
Email: miguelcarvajal@tubatulabal.org

Kwolokam Assessment Area



Assessment Area
154 Acres

1:18,056



Kwolokam Assessment Area



Assessment Area
154 Acres

